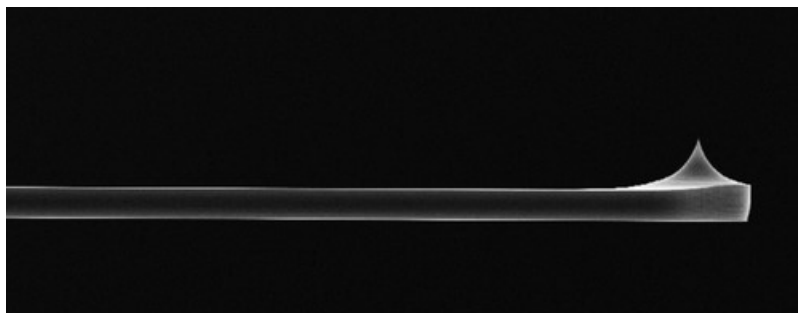
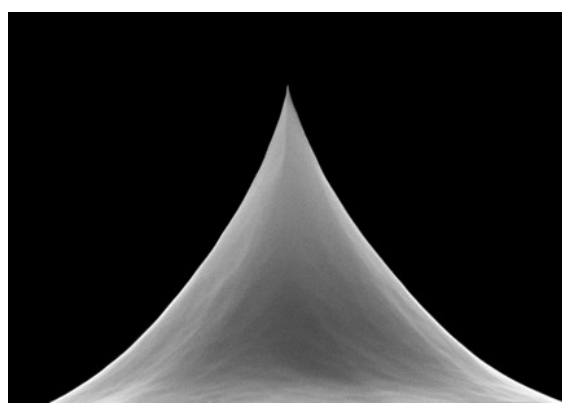
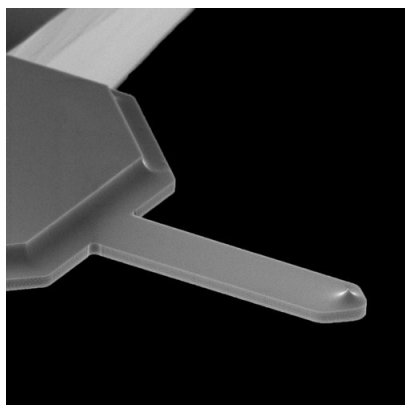


SCOUT 350



カンチレバーの仕様

Parameter	Nominal	Range
Spring constant (N/m)	42	25 - 70
Resonant frequency (kHz)	350	300 - 400
Shape	Rectangular	
Length (μm)	125	123 - 127
Width (μm)	30	28 - 32
Thickness (μm)	4.5	4.0 - 5.0
Material	Silicon (n-type, Antimony)	
Resistivity (Ωcm)	0.02	0.015 - 0.025

テックの仕様

Parameter	Nominal	Range
Radius (nm)	5	< 10
Height (μm)	7	5 - 8
Set back (μm)	7.5	6.5 - 8.5
Shape	Conical	
Cone Angle ($^\circ$)	25	15 - 40
Material	Silicon (n-type, Antimony)	
Resistivity (Ωcm)	0.02	0.015 - 0.025